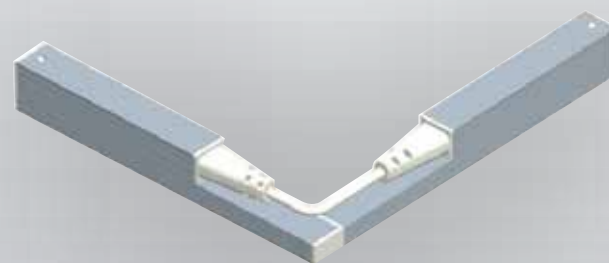


LED Linkable Light Bar 100Lm/W



- Hotels
- Retail stores
- Hospitals
- Shopping Centers
- Hall ways & Corridors
- Lounge areas
- Interior decoration
- Hidden light applications



- High Efficiency 100Lm/W
- Aluminum & PC Cover
- IP40
- Double side connection available
- Suitable for surface mounted or recessed installation
- Intergrated Driver / AC230V Direct
- Linkable with L shape corners
- Linkable up to 350W
- Linkable with no dark spots
- Available sizes: 0.3m, 0.6m & 1.2m



www.iinno-led.com



[iinno_light](https://www.instagram.com/iinno_light)



[iinno Light](https://www.facebook.com/iinnoLight)



[iinno Light](https://www.youtube.com/iinnoLight)

LM80



RoHS
compliance
2011/65/EU