

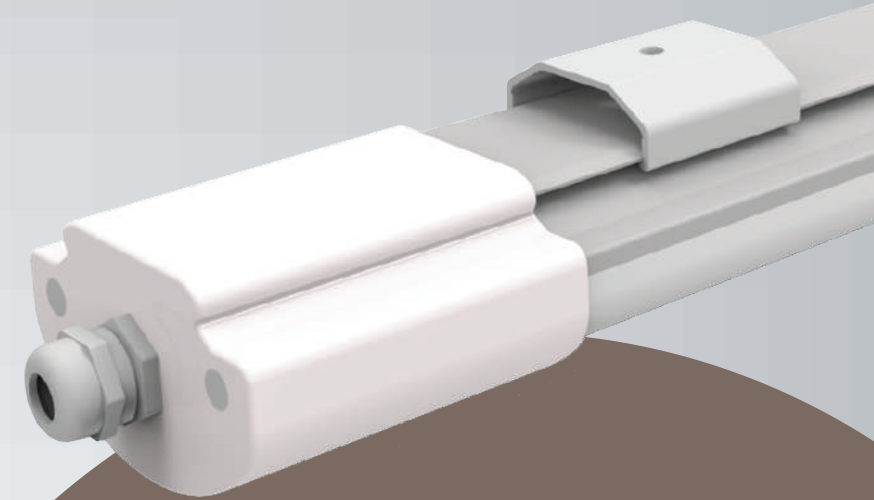


Mini Tri-Proof & Linear Light



Designing Your Lighting Solutions

- Supermarkets
- Parking lots
- Shopping centers
- Exhibition halls
- Warehouses
- Manufacturing facilities
- Offices
- Commercial Applications

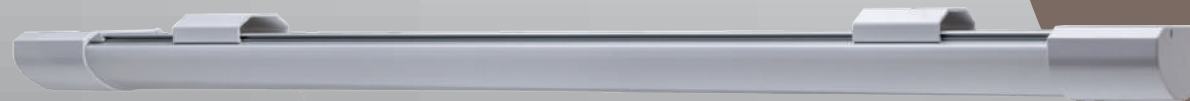


up to
170Lm/W

530mm, 1150mm, 1500mm



600mm, 1200mm, 1500mm



Advantages

- Available with 130Lm/W, 150Lm/W or 170Lm/W luminous efficiency
- Non-Flickering Driver
- IP66 or IP44 rating
- Linkable design optional
- Dimmable version available
- Suitable for suspended or surface mounted installation
- Voltage: AC100-277V
- Warranty: 5 years



www.iinno-led.com



[iinno_light](https://www.instagram.com/iinno_light)



[iinno Light](https://www.facebook.com/iinnoLight)



[iinno Light](https://www.youtube.com/iinnoLight)



[iinno](https://www.linkedin.com/company/iinno)



RoHS compliance 2011/65/EU

