

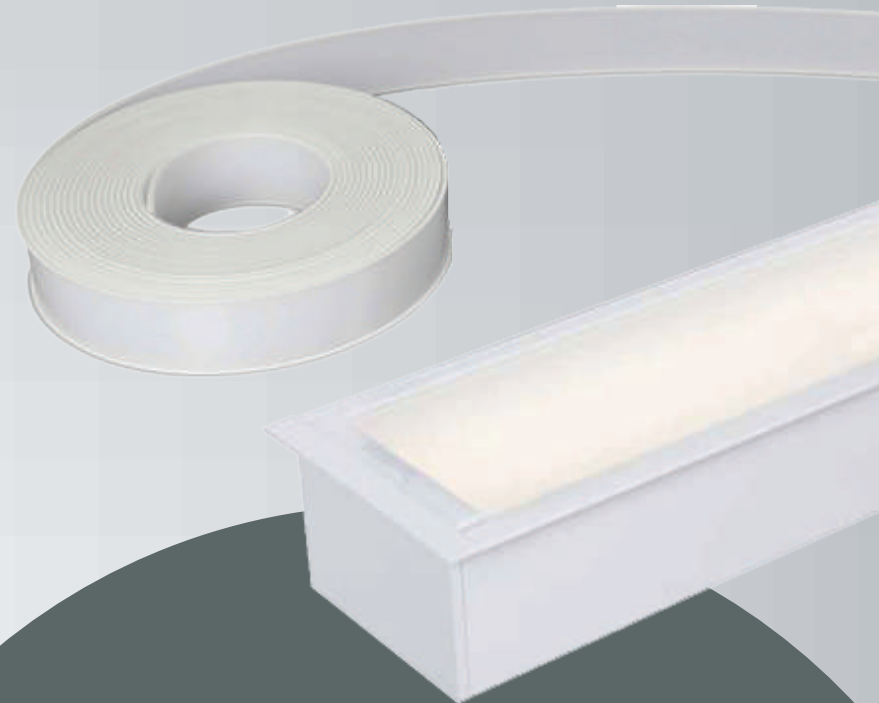
Linear Light with continuous cover



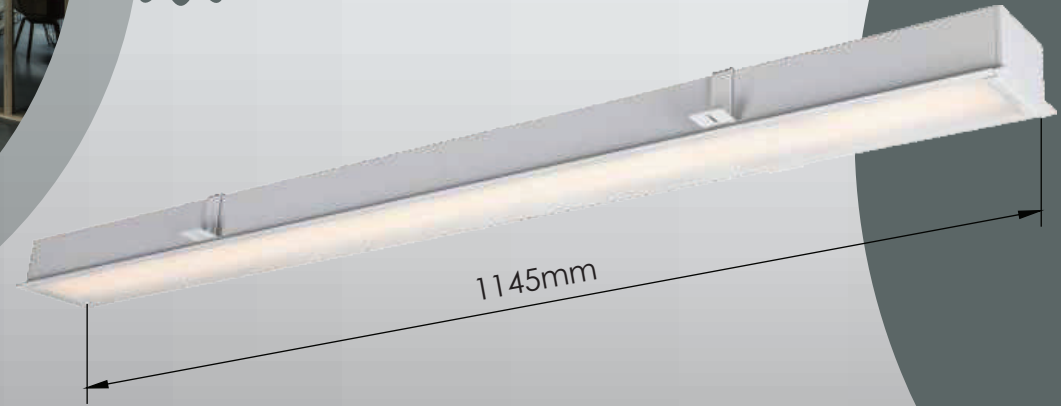
Designing Your
Lighting Solutions



- Architectural lighting
- Interior decoration
- Reception areas
- Offices
- Hotels
- Shopping centers
- Lounge areas
- Cafés & Bars



linkable
design



Advantages

- Continuous cover, without seams
- Linkable design
- **SAMSUNG** LEDs
- **LiFud** Driver
- Size options: 0.6m up to 2.3m
- Dimmable versions available
- CRI>80/CRI>90
- Housing color options: Black White, Grey
- Warranty: 3 years



www.iinno-led.com



[iinno_light](#)



[iinno Light](#)



[iinno Light](#)



[iinno](#)



RoHS
compliance
2011/65/EU