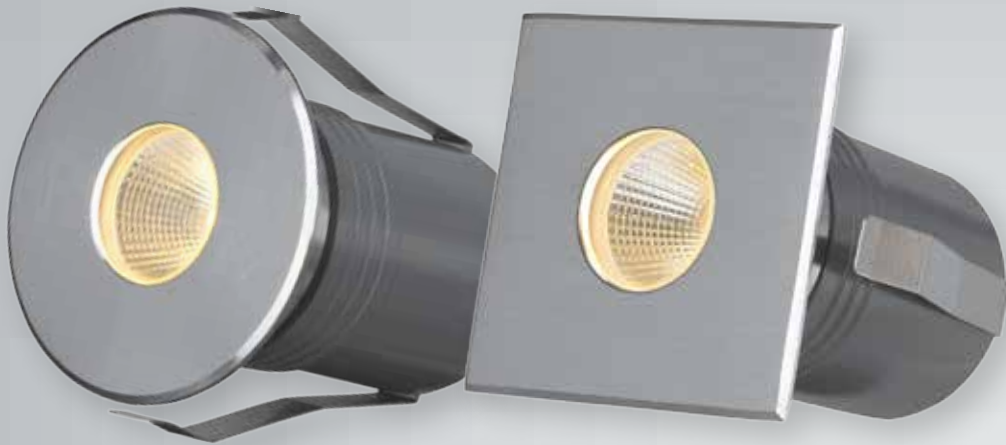


Inground Light

iinno
intelligent innovations

Designing Your
Lighting Solutions



Tempered
glass cover

○ Round design: Ø70mm

□ Square design: 66x66mm

Advantages

- Square or Round design
- Beam angle options: 18°, 24°, 32°
- Tempered glass cover
- Die-cast, powder coated aluminum housing
- Satinless stell face ring
- Operating Voltage: 24V, 120V or 240V
- Honeycomb louver available
- Warranty: 2 or 5 years



Applications: Outdoors Illumination • Architectural lighting • Landscape lighting • Commercial building exteriors • Residential building exteriors



www.iinno-lighting.com



[iinno_light](https://www.instagram.com/iinno_light)



[iinno light](https://www.facebook.com/iinno_light)



[iinno light](https://www.youtube.com/iinno_light)



[iinno light](https://www.linkedin.com/company/iinno_light)

